

# East Marginal Way

Seattle Bicycle Advisory Board

07/11/2018

Seattle Department of Transportation



City of Seattle

# Meeting purpose

- Project overview
- Updates since December 2017
- Key questions for north segment
- Next steps



# Project goals



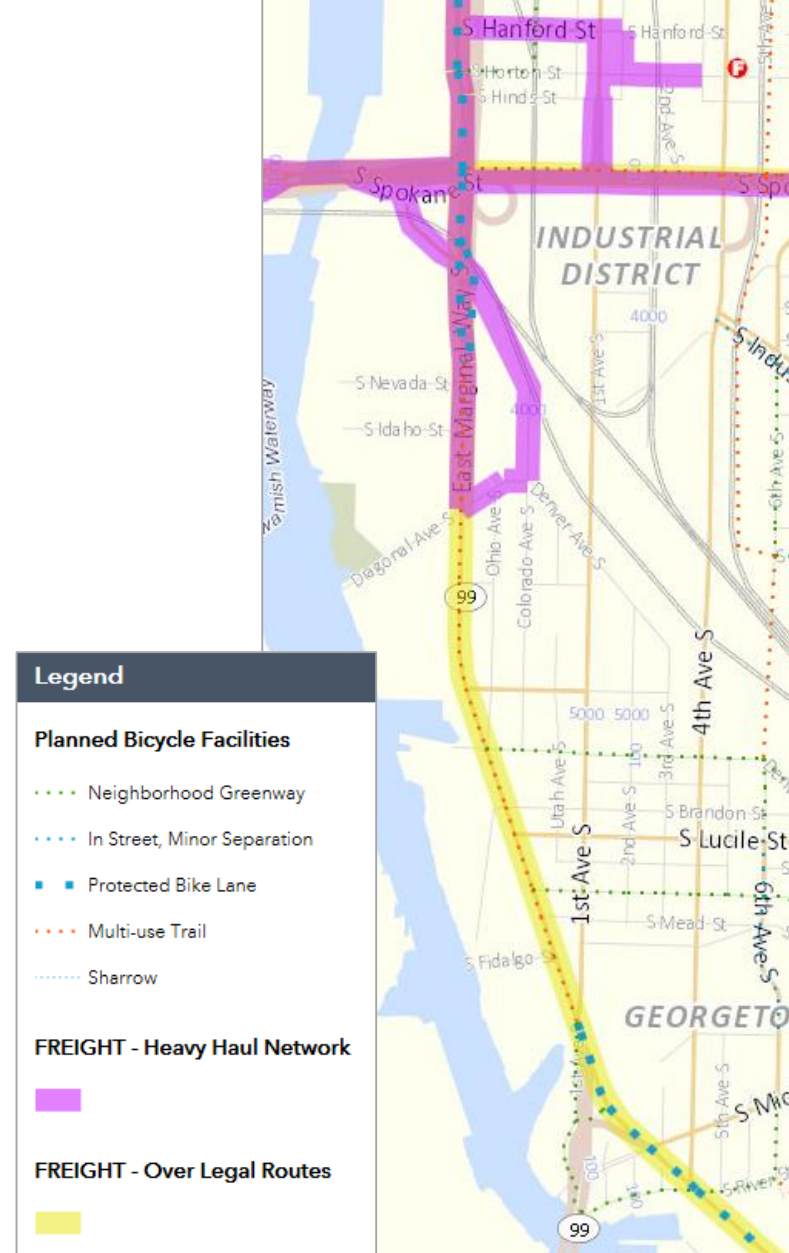
Improve freight mobility and access



Promote efficiencies in freight movements



Enhance separation for people walking and biking





# Project overview - North segment

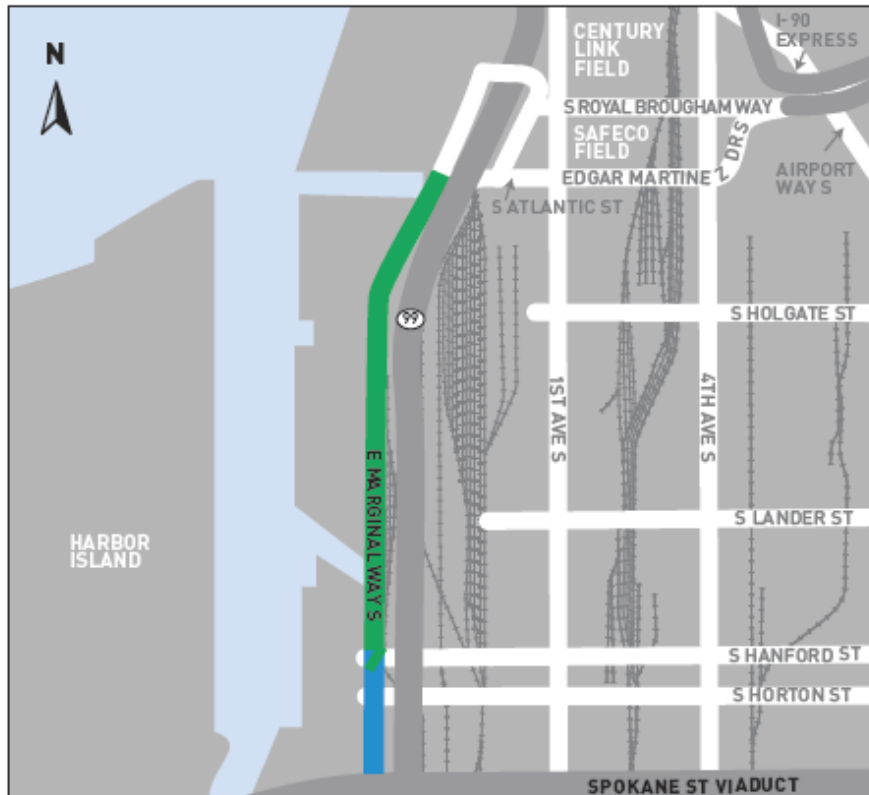


Facing north

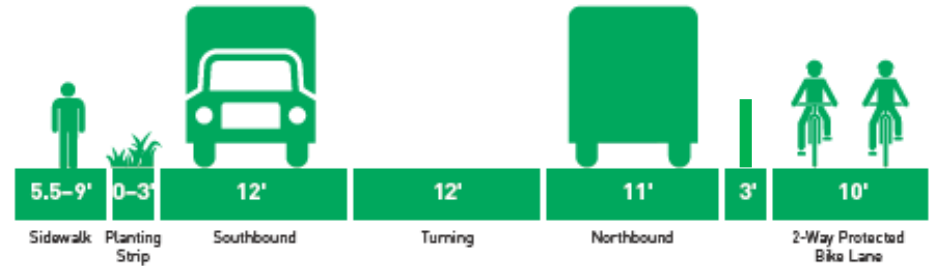


# Project overview - North segment

## NORTH SEGMENT



**S Atlantic St to S Hanford St, looking north**  
2-way protected bike lane on east side of street



**S Hanford St to S Spokane St, looking north**  
Multi-use path on west side of street



# Project overview - Central segment

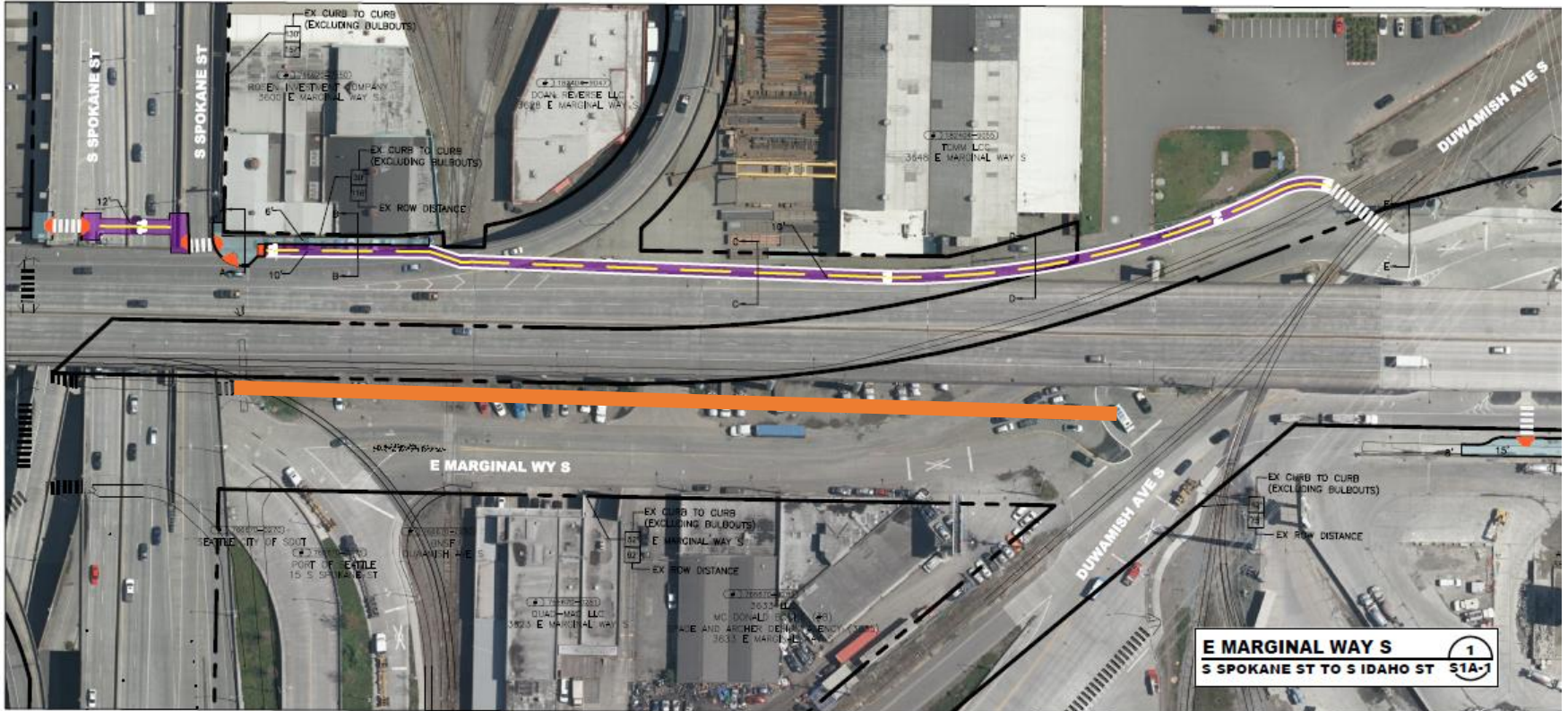


Facing north





# Central segment connections



# Project overview - South segment



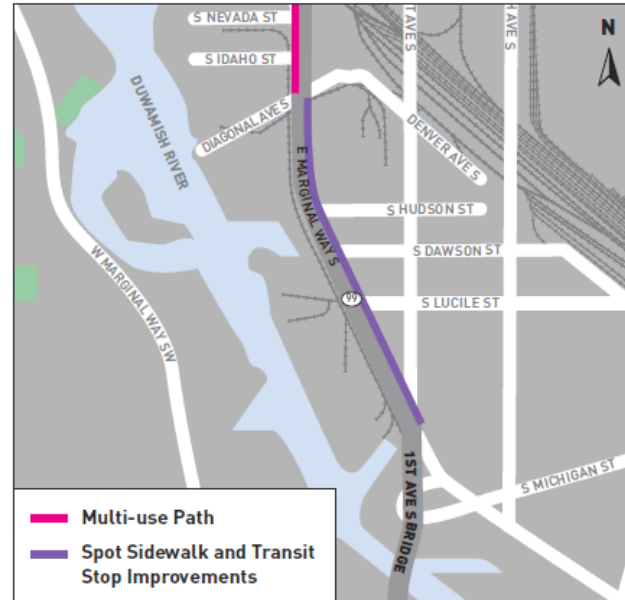
Facing north



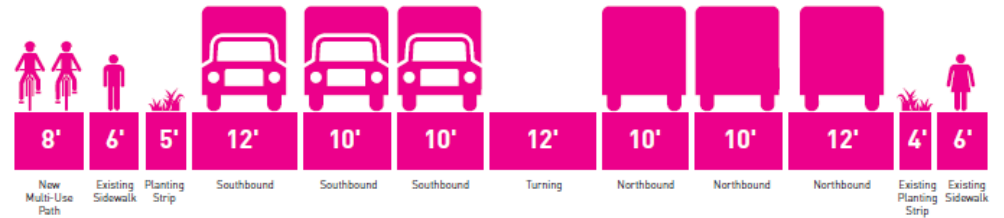


# Project overview - South segment

## SOUTH SEGMENT




New multi-use path on west side of street



# Updates since December 2017

- Reached 30% design (March 2018)
- Researching ROW details and working with railroads
- Central section redesign still underway

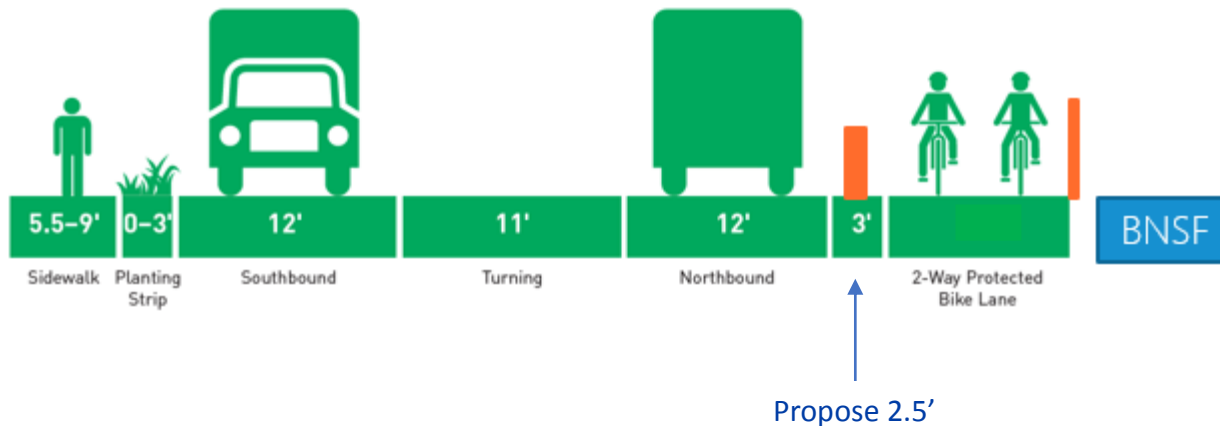


2015-2016	2017			2018	2019	2020	2021-2022
<ul style="list-style-type: none"> <li>• Data collection</li> <li>• Early design workshops</li> <li>• Preliminary traffic analysis</li> </ul>	<b>SPRING</b> <ul style="list-style-type: none"> <li>• Develop options</li> <li>• Seek input on options</li> </ul>	<b>SUMMER</b> <ul style="list-style-type: none"> <li>• Create preliminary engineering designs</li> </ul>	<b>FALL</b> <ul style="list-style-type: none"> <li>• 10% design complete</li> </ul>	<b>WINTER-SPRING</b> <ul style="list-style-type: none"> <li>• 30% design complete</li> </ul>	<ul style="list-style-type: none"> <li>• Apply for federal grants</li> <li>• Secure other funding partnerships</li> </ul>	<ul style="list-style-type: none"> <li>• Complete design</li> </ul>	<ul style="list-style-type: none"> <li>• Begin construction</li> </ul>
Online Open House and Survey						Pending success in funding	
ONGOING OUTREACH AND ENGAGEMENT							



# Specific design details

- Bike facility between S Horton St and S Atlantic St
  - 7000' = 12', most with planted buffer
  - 2500' = 9.5' - 10' wide
  - Vertical barriers on both sides of trail





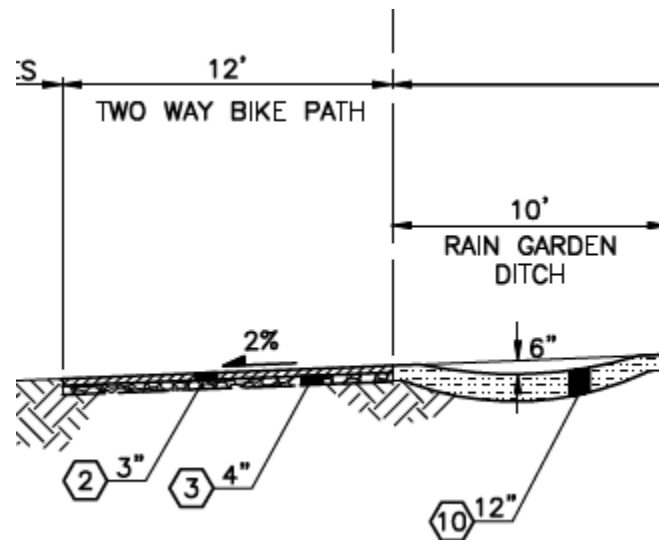
# Specific design details, con't

- Pinch point north of S Hanford St



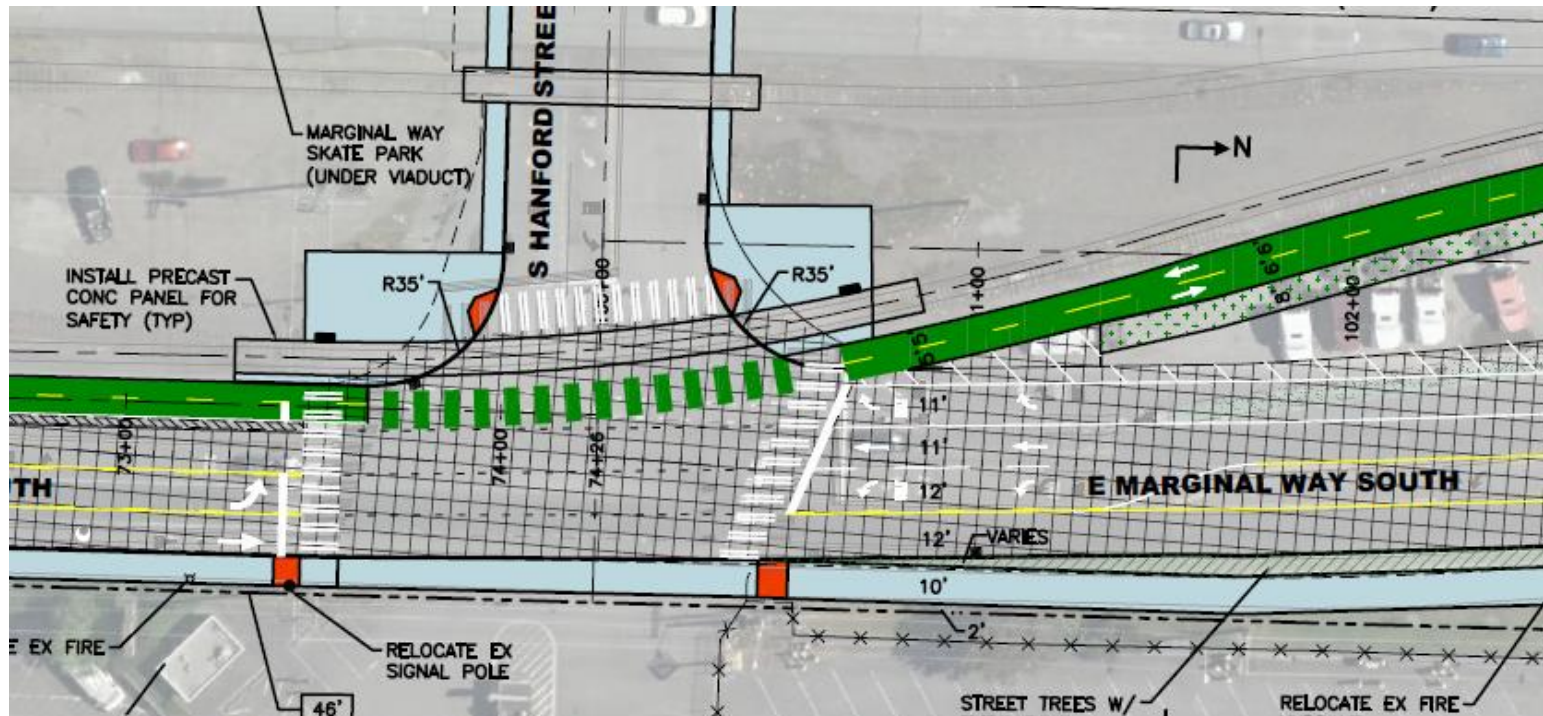
# Specific design details, con't

- Two-way Protected Bike Lanes or Trail
  - Transitions at S Atlantic St and S Horton St
  - Over 70% of trail facility will be 12' wide



# Marginal/Hanford Intersection

- Long crossing may need to include crossing of tracks





# E Marginal Way & S Horton St



Facing north



# Specific design details

- Option for two-way bicycle facility on east side of E Marginal Way S between S Horton St and S Spokane St



# Questions?

Megan Hoyt | (206) 684-5127

eastmarginal@seattle.gov | (206) 684-5189

